

PHILIPPE BAY

COVER

SIYE PLAN

1 OF 2

OVERALL UTILITIES

GRADING/DRAINAGE

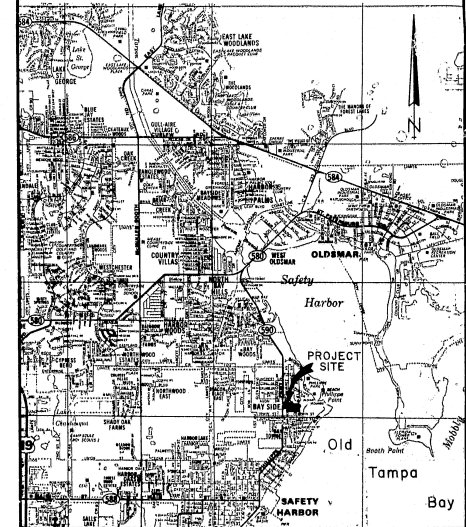
PLAN/PROFILE

PLAN/PROFILE

PHILIPPE BAY

CONSTRUCTION PLANS

PROJECT LOCATION MAP



INDEX OF DRAWINGS

SHEET NUMBER	DESCRIPTION
1	TITLE SHEET
2	SITE PLAN
3	OVERALL UTILITIES
4	GRADING AND DRAINAGE
5	PLAN-PROFILE
6	PLAN-PROFILE
7	PLAN-PROFILE
8	TYPICAL CONSTRUCTION DETAILS
9	TYPICAL DRAINAGE SECTIONS
10	SANITARY SEWER DETAILS
11	WATER DISTRIBUTION DETAILS
12	STORM SEWER DETAILS

CITY OF SAFETY HARBOR

- APPROVED
- APPROVED AS NOTED
- DISAPPROVED
- RESUBMIT WITH CHANGES AS NOTED

[Signature] 5/3/83
City Engineer

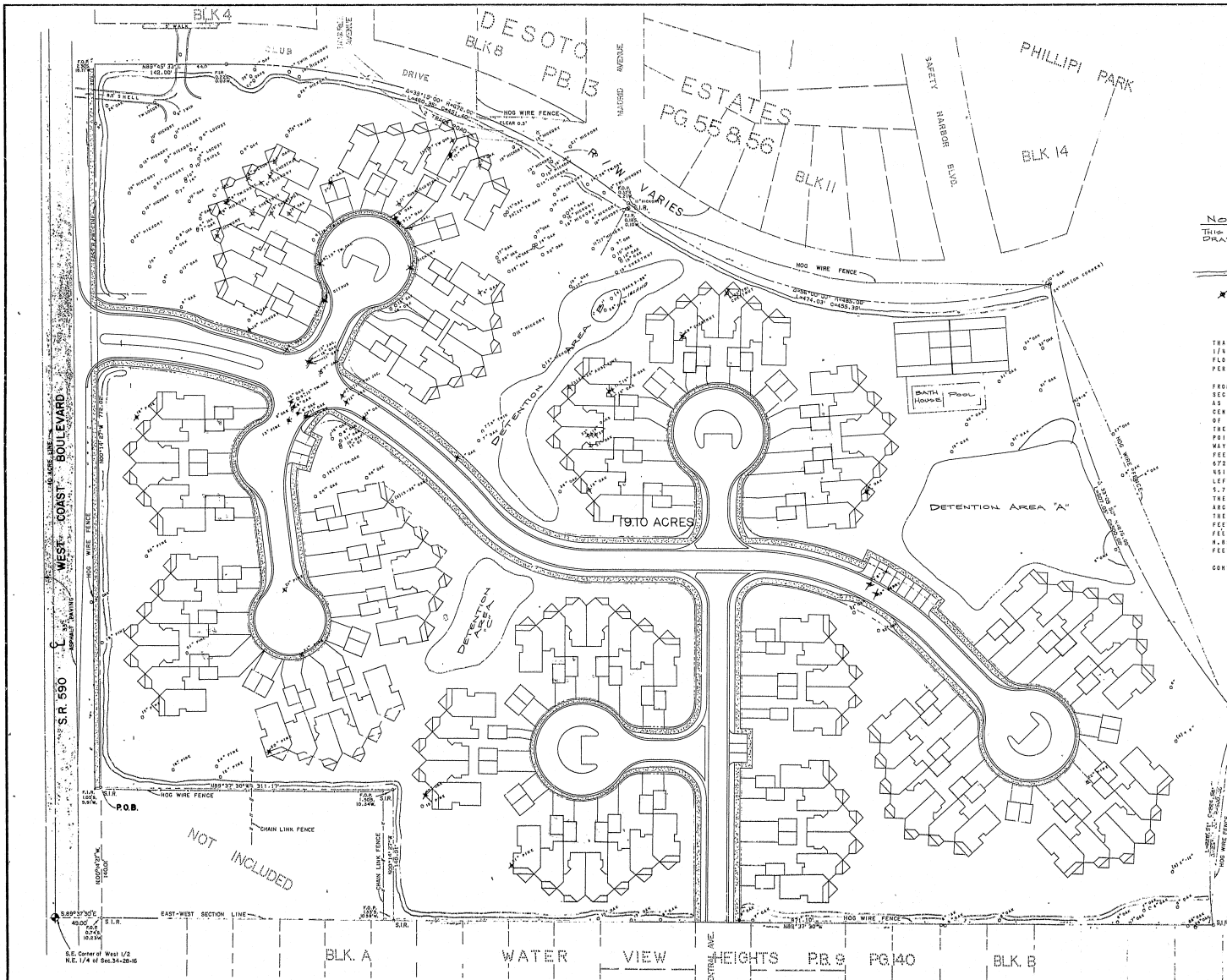
PREPARED FOR :

TRECO COMMUNITIES, INC.

PREPARED BY: *[Signature]* RICHARD

George F. Young, Inc.
 ARCHITECTS • ENGINEERS • PLANNERS • SURVEYORS
 13 1/2 WASHINGTON AVE. N. • ST. PETERSBURG, FL 33701 • 813/324-8417
 81 001 1/2 N. NORTH • PALM HARBOR, FL 32918 • 813/764-4718
 11 1/2 W. BERRY • WEST SHARADON, FL 32087 • 813/763-8400

DESIGNED	APPROVED	SCALE
CHECKED	<i>[Signature]</i>	DATE
		PROJECT NO. 02822002
		DRAWING NO.



NOTES:
 THIS DRAWING FOR GRAPHIC PURPOSE ONLY; SEE OTHER DRAWINGS IN THIS SET FOR DETAILED DIMENSIONS.
 _____ INDICATES PROPOSED 4" HIGH LANDSCAPED BERM
 * INDICATES TREE TO BE REMOVED

LEGAL DESCRIPTION
 THAT PORTION OF LAND LOCATED AND LYING IN THE EAST 1/2 OF THE NORTHEAST 1/4 OF SECTION 34, TOWNSHIP 28 SOUTH, RANGE 16 EAST, PINELLAS COUNTY, FLORIDA, ALSO KNOWN AS THE VACATED PLAT OF TROPICAL HIGHLANDS, VACATED PER INSTRUMENT #875650, BEING MORE PARTICULARLY DESCRIBED AS FOLLOWS:
 FROM THE SOUTHEAST CORNER OF THE WEST 1/2 OF THE NORTHEAST 1/4 OF SECTION 34, TOWNSHIP 28 SOUTH, RANGE 16 EAST, PINELLAS COUNTY, FLORIDA AS A POINT OF REFERENCE; THENCE S.88.37°30"E., ALONG THE EASTWEST CENTERLINE OF SAID SECTION 34, 49.00 FEET TO A POINT ON THE EAST RIGHT OF WAY LINE OF STATE ROAD 590 (WEST COAST BOULEVARD) (PHILLIPI PARKWAY); THENCE N.00° 01'27"W., ALONG SAID RIGHT OF WAY LINE, 180.01 FEET FOR A POINT OF BEGINNING; THENCE CONTINUE N.00 01'27"W., ALONG SAID RIGHT OF WAY LINE 772.02 FEET; THENCE LEAVING SAID LINE N.68 59'33"E., 142.00 FEET TO A POINT OF CURVE; THENCE ALONG A CURVE TO THE RIGHT, RADIUS 672.00 FEET; DELTA 39 15'00"; ARC 460.35 FEET; CHORD 5.70 34'57"E., 451.00 FEET TO A POINT OF REVERSE CURVE; THENCE ALONG A CURVE TO THE LEFT, RADIUS 485.00 FEET; DELTA 56 00'00"; ARC 474.03 FEET; CHORD 5.78 58'27"E., 455.39 FEET TO A POINT OF SWOP; THENCE ALONG A CURVE TO THE LEFT, CONCAVE TO THE NORTHEAST, RADIUS 874.00 FEET; DELTA 33 08'50"; ARC 507.05 FEET; CHORD 5.22 59'27"E., 500.00 FEET TO A POINT OF CURVE; THENCE ALONG A CURVE TO THE LEFT; CONCAVE TO THE EAST, RADIUS 500.00 FEET; DELTA 25 57'32"; ARC 226.10 FEET; CHORD 5.00 08'37"W., 224.58 FEET TO A POINT ON SAID EAST/WEST CENTERLINE OF SAID SECTION 34; THENCE N.69 37'30"W., ALONG SAID LINE 871.10 FEET; THENCE N.00 01'27"W., 140.00 FEET; THENCE N.69 37'30"W., 311.17 FEET TO THE POINT AND PLACE OF BEGINNING, CONTAINING 19.10 ACRES MORE OR LESS

SITE DATA

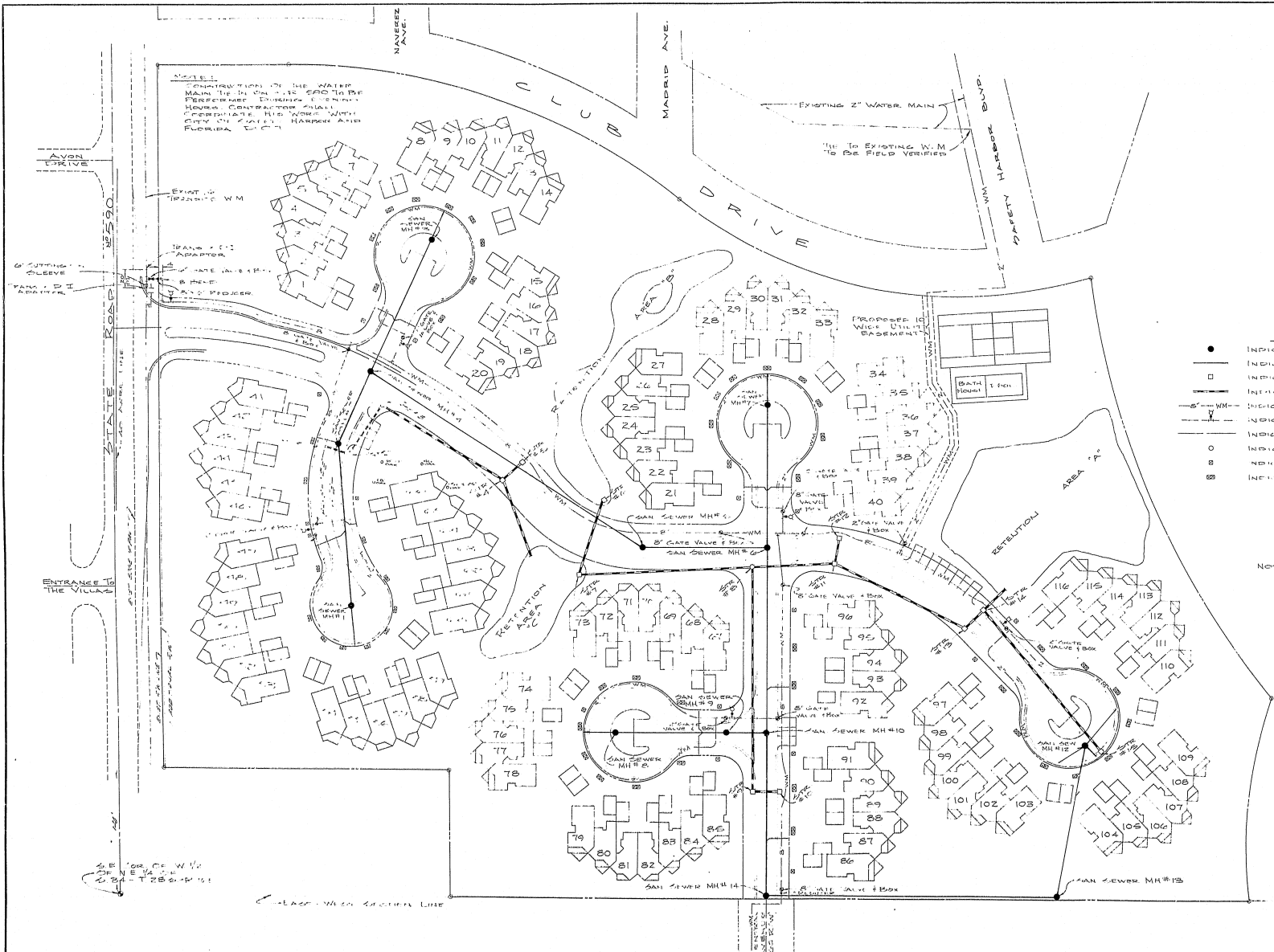
ITEM	ACRES	PERCENTAGE
BUILDING	3.26	17%
IMPROVEMENTS	3.25	40%
GREEN SPACE	6.68	35%
TOTAL SITE	19.10	100%

GROSS SITE AREA (INCLUDING HALF RIGHT-OF-WAY) = 19.97 ACRES
DENSITY:
 BUILDING UNIT: 116
 DENSITY: 5.8 UNITS/ACRE
GROSS FLOOR AREA: 116, 602 S.F.
FLOOR AREA RATIO: 116, 602/669, 893.2 = 15.70%
COMMON OPEN SPACE AND REC. AREA:
 REQUIRED 27,320 S.F.
 PROPOSED TOTAL 162,400 S.F.
 LARGEST SINGLE REC. AREA 71,000 S.F. (44% OF TOTAL)
MAX. BUILDING HEIGHT: 25 FT.
MIN. 1ST FLOOR AREA: 980 S.F.
MAX UNIT FLOOR AREA: 1,350 S.F.
PARKING:
 PROVIDED - 155 SPACES
 REQUIRED - 2 PER DWELLING = 232
 + VISITOR = 25
 TOTAL = 258

SETBACKS
 1. MINIMUM SETBACK FROM R/W: 15 FEET
 MINIMUM SETBACK FROM SW 590 R/W: 55 FEET
 MINIMUM SETBACK FROM PROPERTY LINES: 20 FEET
 MINIMUM BUILDING SEPARATION: 20 FEET

OWNER TRECO COMMUNITIES INC.	PROJECT NAME PHILIPPE BAY	PROJECT NAME SITE PLAN	SEC. 34, TWP. 28 S., RNG. 16 E.	NORTH ↑	SHEET 2 12	REVISIONS
---------------------------------	------------------------------	---------------------------	---------------------------------	------------	------------------	-----------

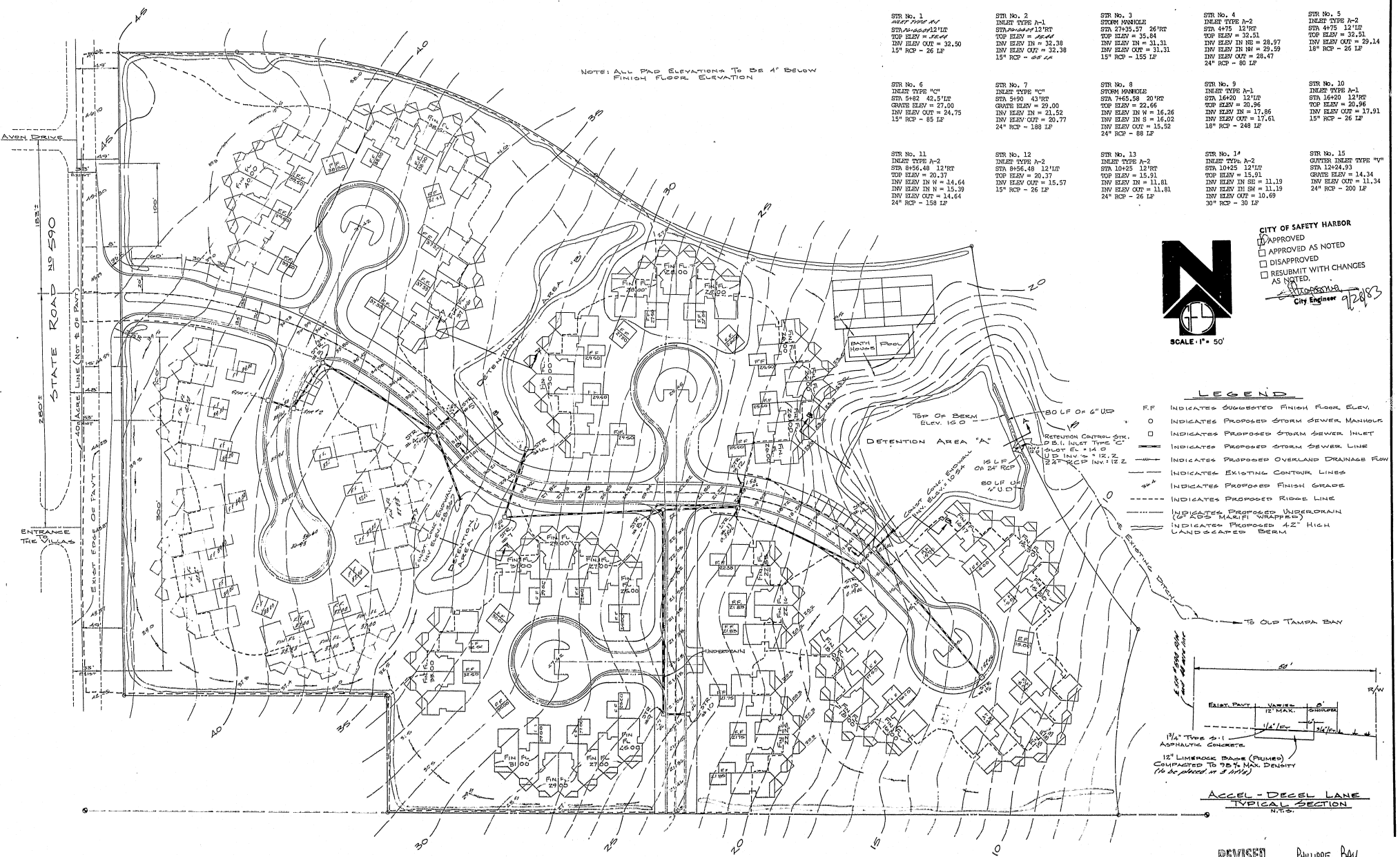
George F. Young, Inc.
 ARCHITECTS • ENGINEERS • PLANNERS • SURVEYORS
 1000 N. 10th Street, Suite 100, St. Petersburg, FL 33705
 Phone: (813) 339-1111 Fax: (813) 339-1112
 Registered Professional Engineer No. 12474
 Registered Professional Surveyor No. 12474
 Registered Professional Planner No. 12474
 Registered Professional Architect No. 12474
 License No. 12474
 License No. 12474
 License No. 12474



- LEGEND**
- INDICATES PROPOSED SAN SEWER MANHOLE
 - INDICATES PROPOSED SAN SEWER LINE
 - - - INDICATES PROPOSED STORM SEWER INLET
 - - - INDICATES PROPOSED STORM SEWER LINE
 - - - INDICATES PROPOSED WATER LINE
 - INDICATES PROPOSED FIRE HYDRANT
 - - - INDICATES EXISTING WATER LINE
 - INDICATES PROPOSED STORM SEWER MANHOLE
 - INDICATES PROPOSED SINGLE WATER SERVICE
 - INDICATES PROPOSED DOUBLE WATER SERVICE

NOTE: UNDERDRAIN TO BE PLACED @ DISCRETION OF ENGINEER.

OWNER	PROJECT NAME	SEC. TWP. S. R. NG. E.	NORTH	SHEET	REVISIONS
TRECO COMMUNITIES INC.	PHILIPPE BAY			3	<p>REVISION 1: PERFORMER TO VERIFY THE SAFETY HARBOR D.C. RECORDS FOR THE SAN SEWER MAIN LAYOUT AND TO CORRELATE HIS WORK WITH THE CITY OF SAFETY HARBOR AND FLORIDA D.C. RECORDS.</p>
	OVERALL UTILITIES			12	
					<p>George F. Young, Inc. CONSULTING ENGINEERS LAND PLANNERS & SURVEYORS 88 ARLINGTON AVE. N. ST. PETERSBURG, FLORIDA</p> <p>APPROVED: <i>[Signature]</i> DATE: 6-27-87 DRAWN BY: DATE: 6-27-87 CHECKED: DATE: 6-27-87</p>



NOTE: ALL FIN. ELEVATIONS TO BE 4" BELOW FINISH FLOOR ELEVATION

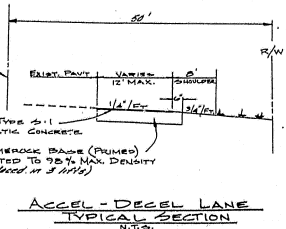
- STR No. 1
INLET TYPE A-1
STA 5145+00 12" RT
TOP ELEV = 35.84
INV ELEV IN = 32.38
INV ELEV OUT = 32.50
15" RCP - 26 LF
- STR No. 2
INLET TYPE A-1
STA 5145+00 12" RT
TOP ELEV = 35.84
INV ELEV IN = 32.38
INV ELEV OUT = 32.38
15" RCP - 26 LF
- STR No. 3
STORM MANHOLE
STA 5145+57 26" RT
TOP ELEV = 35.84
INV ELEV IN = 31.31
INV ELEV OUT = 31.31
15" RCP - 155 LF
- STR No. 4
INLET TYPE A-2
STA 4475 12" RT
TOP ELEV = 32.31
INV ELEV IN W = 28.97
INV ELEV IN N = 29.59
INV ELEV OUT = 28.47
24" RCP - 80 LF
- STR No. 5
INLET TYPE A-2
STA 4475 12" RT
TOP ELEV = 32.31
INV ELEV IN W = 29.59
INV ELEV OUT = 29.14
18" RCP - 26 LF
- STR No. 6
INLET TYPE A-1
STA 5482 42.5" RT
GRATE ELEV = 27.00
INV ELEV IN = 24.75
15" RCP - 85 LF
- STR No. 7
INLET TYPE A-1
STA 5490 43" RT
GRATE ELEV = 29.00
INV ELEV IN = 21.52
INV ELEV OUT = 20.77
24" RCP - 188 LF
- STR No. 8
STORM MANHOLE
STA 7465.58 20" RT
TOP ELEV = 22.66
INV ELEV IN W = 16.26
INV ELEV IN S = 16.02
INV ELEV OUT = 15.52
24" RCP - 68 LF
- STR No. 9
INLET TYPE A-1
STA 16420 12" RT
TOP ELEV = 20.96
INV ELEV IN = 17.86
INV ELEV OUT = 17.61
18" RCP - 248 LF
- STR No. 10
INLET TYPE A-1
STA 16420 12" RT
TOP ELEV = 20.96
INV ELEV IN = 17.86
INV ELEV OUT = 17.91
15" RCP - 26 LF
- STR No. 11
INLET TYPE A-2
STA 8456.48 12" RT
TOP ELEV = 20.37
INV ELEV IN W = 14.64
INV ELEV IN N = 15.39
INV ELEV OUT = 14.64
24" RCP - 158 LF
- STR No. 12
INLET TYPE A-2
STA 8456.48 12" RT
TOP ELEV = 20.37
INV ELEV IN W = 15.57
15" RCP - 26 LF
- STR No. 13
INLET TYPE A-2
STA 10425 12" RT
TOP ELEV = 15.91
INV ELEV IN W = 11.81
INV ELEV OUT = 11.81
24" RCP - 26 LF
- STR No. 14
INLET TYPE A-2
STA 10425 12" RT
TOP ELEV = 15.91
INV ELEV IN W = 11.19
INV ELEV IN S = 11.19
INV ELEV OUT = 10.69
30" RCP - 30 LF
- STR No. 15
GUTTER UNDER TYPE "F"
STA 12454.93
GRATE ELEV = 14.34
INV ELEV IN = 11.34
24" RCP - 200 LF



CITY OF SAFETY HARBOR
 APPROVED
 APPROVED AS NOTED
 DISAPPROVED
 RESUBMIT WITH CHANGES AS NOTED.
 City Engineer 9/28/83

LEGEND

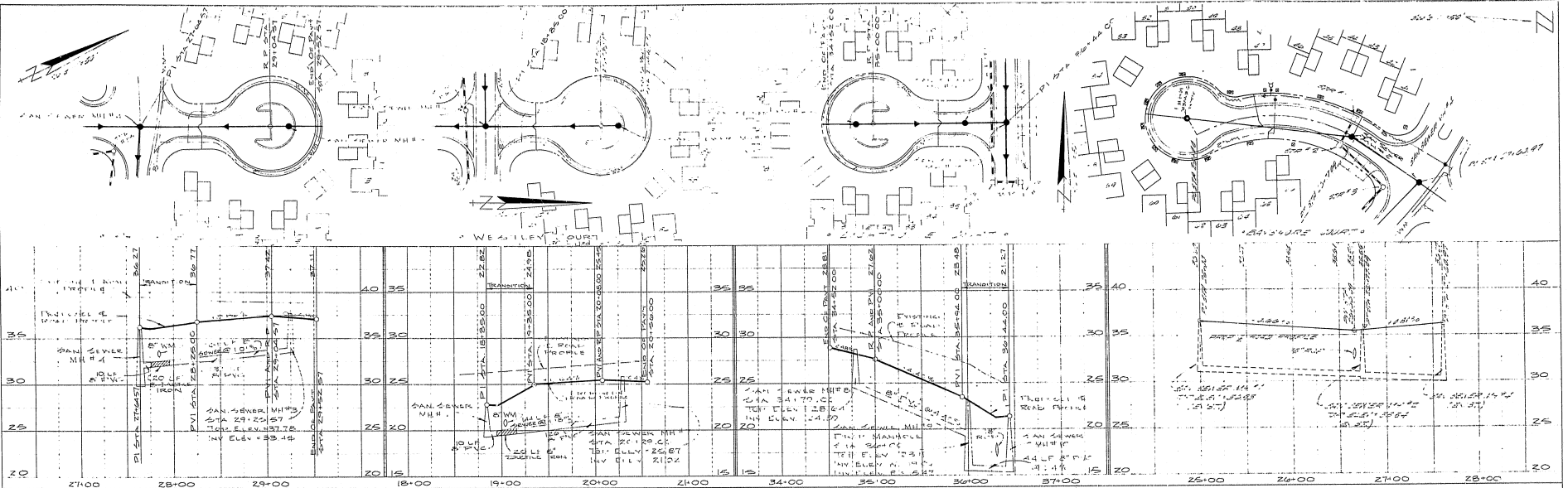
- FF INDICATES SUGGESTED FINISH FLOOR ELEV.
- INDICATES PROPOSED STORM SEWER MANHOLE
- INDICATES PROPOSED STORM SEWER INLET
- INDICATES PROPOSED STORM SEWER LINE
- INDICATES PROPOSED OVERLAND DRAINAGE FROM
- INDICATES EXISTING CONTOUR LINES
- INDICATES PROPOSED FINISH GRADE
- INDICATES PROPOSED RIDGE LINE
- INDICATES PROPOSED UNDERDRAIN (6" O.D. M.A.M.P. WRAPPED)
- INDICATES PROPOSED 4:2" HIGH LANDSCAPED BERM



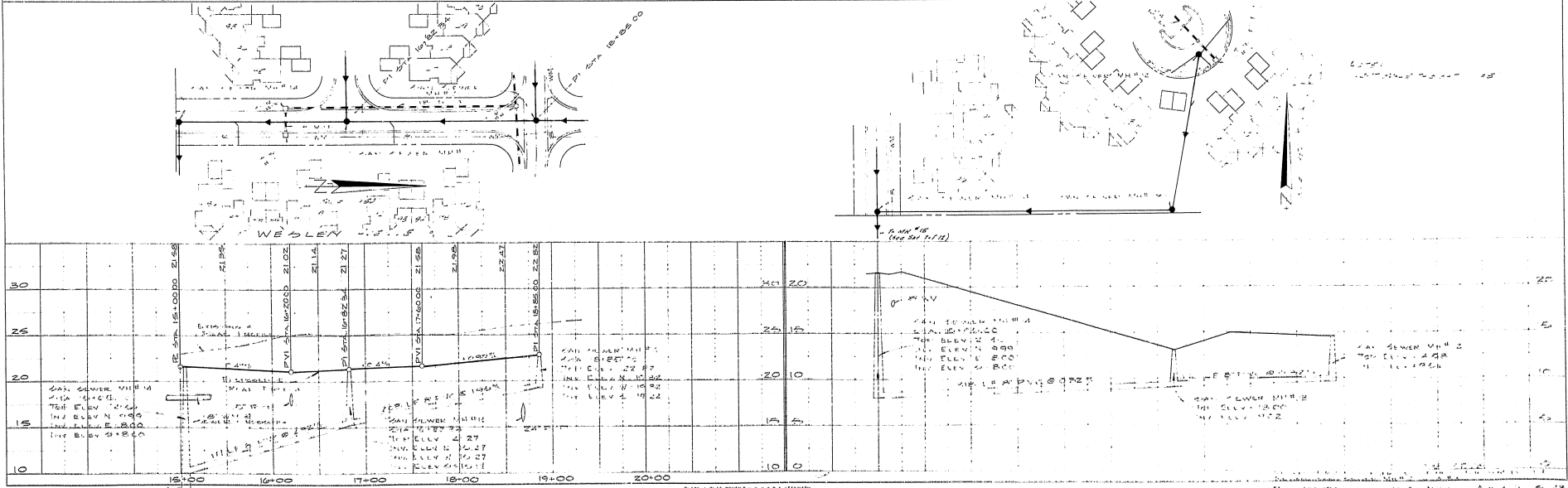
REVISED PHILIPPE BAY

OWNER TREC COMMUNITIES INC.	PROJECT NAME PHILIPPE BAY	SEC. — TWP. — S., R.N.G., E. GRADING AND DRAINAGE PLAN	NORTH	SHEET 4 / 12	REVISIONS
					1. REVISED FROM CITY OF SAFETY HARBOR... 2. REVISED FROM CITY OF SAFETY HARBOR... 3. REVISED FROM CITY OF SAFETY HARBOR... 4. REVISED FROM CITY OF SAFETY HARBOR... 5. REVISED FROM CITY OF SAFETY HARBOR... 6. REVISED FROM CITY OF SAFETY HARBOR... 7. REVISED FROM CITY OF SAFETY HARBOR... 8. REVISED FROM CITY OF SAFETY HARBOR... 9. REVISED FROM CITY OF SAFETY HARBOR... 10. REVISED FROM CITY OF SAFETY HARBOR... 11. REVISED FROM CITY OF SAFETY HARBOR... 12. REVISED FROM CITY OF SAFETY HARBOR... 13. REVISED FROM CITY OF SAFETY HARBOR... 14. REVISED FROM CITY OF SAFETY HARBOR... 15. REVISED FROM CITY OF SAFETY HARBOR... 16. REVISED FROM CITY OF SAFETY HARBOR... 17. REVISED FROM CITY OF SAFETY HARBOR... 18. REVISED FROM CITY OF SAFETY HARBOR... 19. REVISED FROM CITY OF SAFETY HARBOR... 20. REVISED FROM CITY OF SAFETY HARBOR... 21. REVISED FROM CITY OF SAFETY HARBOR... 22. REVISED FROM CITY OF SAFETY HARBOR... 23. REVISED FROM CITY OF SAFETY HARBOR... 24. REVISED FROM CITY OF SAFETY HARBOR... 25. REVISED FROM CITY OF SAFETY HARBOR... 26. REVISED FROM CITY OF SAFETY HARBOR... 27. REVISED FROM CITY OF SAFETY HARBOR... 28. REVISED FROM CITY OF SAFETY HARBOR... 29. REVISED FROM CITY OF SAFETY HARBOR... 30. REVISED FROM CITY OF SAFETY HARBOR... 31. REVISED FROM CITY OF SAFETY HARBOR... 32. REVISED FROM CITY OF SAFETY HARBOR... 33. REVISED FROM CITY OF SAFETY HARBOR... 34. REVISED FROM CITY OF SAFETY HARBOR... 35. REVISED FROM CITY OF SAFETY HARBOR... 36. REVISED FROM CITY OF SAFETY HARBOR... 37. REVISED FROM CITY OF SAFETY HARBOR... 38. REVISED FROM CITY OF SAFETY HARBOR... 39. REVISED FROM CITY OF SAFETY HARBOR... 40. REVISED FROM CITY OF SAFETY HARBOR... 41. REVISED FROM CITY OF SAFETY HARBOR... 42. REVISED FROM CITY OF SAFETY HARBOR... 43. REVISED FROM CITY OF SAFETY HARBOR... 44. REVISED FROM CITY OF SAFETY HARBOR... 45. REVISED FROM CITY OF SAFETY HARBOR... 46. REVISED FROM CITY OF SAFETY HARBOR... 47. REVISED FROM CITY OF SAFETY HARBOR... 48. REVISED FROM CITY OF SAFETY HARBOR... 49. REVISED FROM CITY OF SAFETY HARBOR... 50. REVISED FROM CITY OF SAFETY HARBOR... 51. REVISED FROM CITY OF SAFETY HARBOR... 52. REVISED FROM CITY OF SAFETY HARBOR... 53. REVISED FROM CITY OF SAFETY HARBOR... 54. REVISED FROM CITY OF SAFETY HARBOR... 55. REVISED FROM CITY OF SAFETY HARBOR... 56. REVISED FROM CITY OF SAFETY HARBOR... 57. REVISED FROM CITY OF SAFETY HARBOR... 58. REVISED FROM CITY OF SAFETY HARBOR... 59. REVISED FROM CITY OF SAFETY HARBOR... 60. REVISED FROM CITY OF SAFETY HARBOR... 61. REVISED FROM CITY OF SAFETY HARBOR... 62. REVISED FROM CITY OF SAFETY HARBOR... 63. REVISED FROM CITY OF SAFETY HARBOR... 64. REVISED FROM CITY OF SAFETY HARBOR... 65. REVISED FROM CITY OF SAFETY HARBOR... 66. REVISED FROM CITY OF SAFETY HARBOR... 67. REVISED FROM CITY OF SAFETY HARBOR... 68. REVISED FROM CITY OF SAFETY HARBOR... 69. REVISED FROM CITY OF SAFETY HARBOR... 70. REVISED FROM CITY OF SAFETY HARBOR... 71. REVISED FROM CITY OF SAFETY HARBOR... 72. REVISED FROM CITY OF SAFETY HARBOR... 73. REVISED FROM CITY OF SAFETY HARBOR... 74. REVISED FROM CITY OF SAFETY HARBOR... 75. REVISED FROM CITY OF SAFETY HARBOR... 76. REVISED FROM CITY OF SAFETY HARBOR... 77. REVISED FROM CITY OF SAFETY HARBOR... 78. REVISED FROM CITY OF SAFETY HARBOR... 79. REVISED FROM CITY OF SAFETY HARBOR... 80. REVISED FROM CITY OF SAFETY HARBOR... 81. REVISED FROM CITY OF SAFETY HARBOR... 82. REVISED FROM CITY OF SAFETY HARBOR... 83. REVISED FROM CITY OF SAFETY HARBOR... 84. REVISED FROM CITY OF SAFETY HARBOR... 85. REVISED FROM CITY OF SAFETY HARBOR... 86. REVISED FROM CITY OF SAFETY HARBOR... 87. REVISED FROM CITY OF SAFETY HARBOR... 88. REVISED FROM CITY OF SAFETY HARBOR... 89. REVISED FROM CITY OF SAFETY HARBOR... 90. REVISED FROM CITY OF SAFETY HARBOR... 91. REVISED FROM CITY OF SAFETY HARBOR... 92. REVISED FROM CITY OF SAFETY HARBOR... 93. REVISED FROM CITY OF SAFETY HARBOR... 94. REVISED FROM CITY OF SAFETY HARBOR... 95. REVISED FROM CITY OF SAFETY HARBOR... 96. REVISED FROM CITY OF SAFETY HARBOR... 97. REVISED FROM CITY OF SAFETY HARBOR... 98. REVISED FROM CITY OF SAFETY HARBOR... 99. REVISED FROM CITY OF SAFETY HARBOR... 100. REVISED FROM CITY OF SAFETY HARBOR...
George F. Young, Inc. CONSULTING ENGINEERS LAND PLANNERS & SURVEYORS 818 ARLINGTON AVE. W. ST. PETERSBURG, FLORIDA DESIGNED BY: [Signature] DATE: 9-27-83 DRAWN BY: [Signature] DATE: 9-27-83 CHECKED BY: [Signature] DATE: 9-27-83					

PLAN
 DATE: 6-21-82
 DRAWN BY: [illegible]
 CHECKED BY: [illegible]
 SCALE: 1" = 40'-0"



PROFILE
 DATE: 6-21-82
 DRAWN BY: [illegible]
 CHECKED BY: [illegible]
 SCALE: 1" = 40'-0"



PLAN & PROFILE OF SEWER LINE

Ray A. [illegible]
 6-21-82

PHILIPP BAY

PLAN/PROFILE

TYPICAL DETAILS

2 OF 2

TYPICAL DRAINAGE

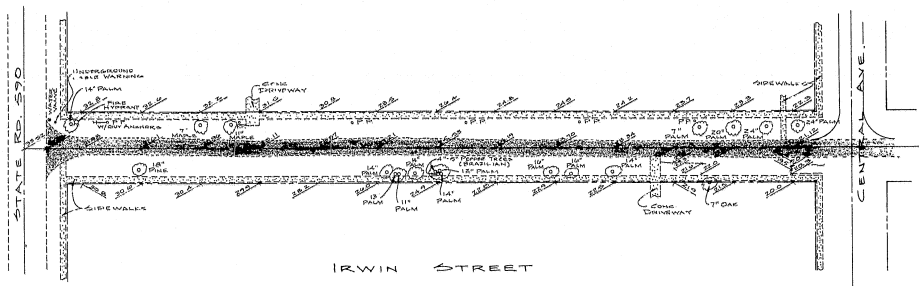
SANITARY SEWER

WATER DIST.

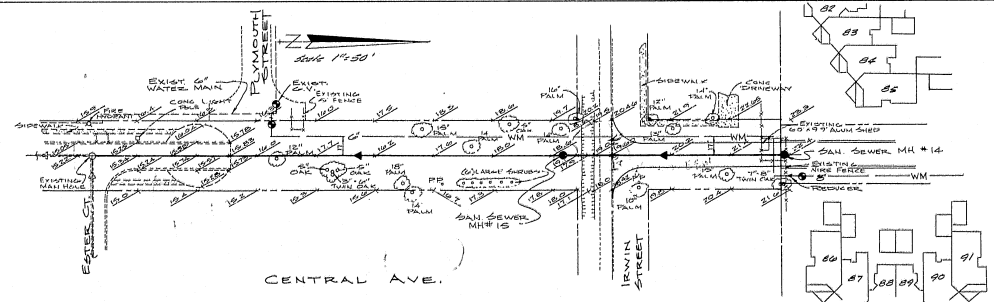
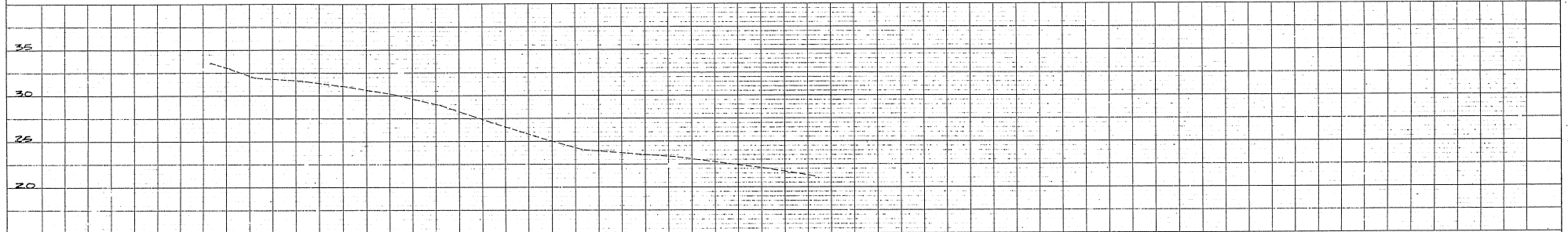
STORM SEWER

PLAN
 PROJECT NO. 100-1000
 SHEET NO. 100-1000
 DATE 10/1/83
 BY J. G. BARKER
 CHECKED BY J. G. BARKER
 APPROVED BY J. G. BARKER

PROFILE
 PROJECT NO. 100-1000
 SHEET NO. 100-1000
 DATE 10/1/83
 BY J. G. BARKER
 CHECKED BY J. G. BARKER
 APPROVED BY J. G. BARKER



NOTE: SHADDED AREA INDICATES PAVT TO BE REPAV'D W/ TYPE II ASPHALTIC CONCRETE.



NOTE: HORIZ. SCALE THIS SHEET 1"=40'

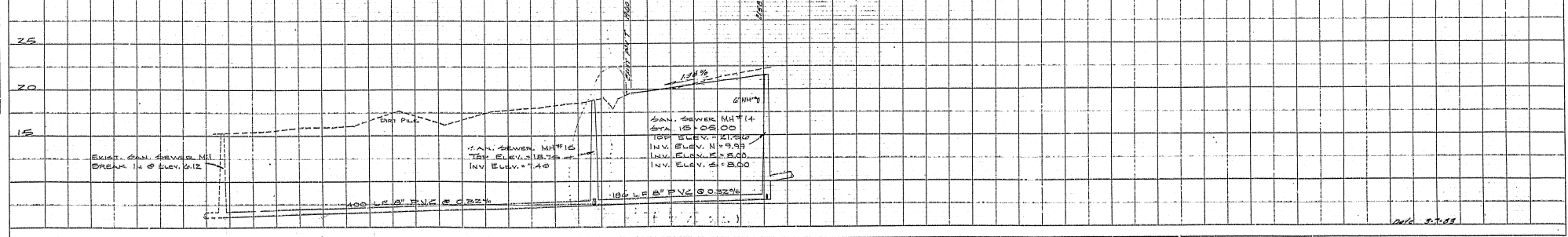
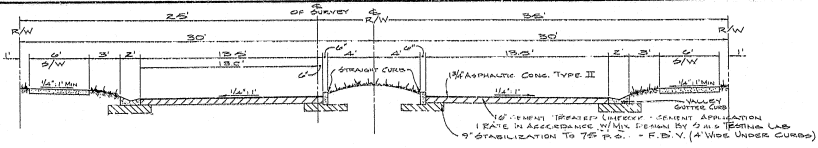


PLATE 2 PLAN-PROFILE OF P. & V. C. STANDARD
 100' PER HORIZONTAL SCALE AND 1"=10' V. C.
 EUGENE DIEBOLD CO.

19 0
 25
 (15)

PLAN-PROFILE SHEET 1 OF 12
 REVISED PER CITY OF SAFETY HARBOR - 4.21.88

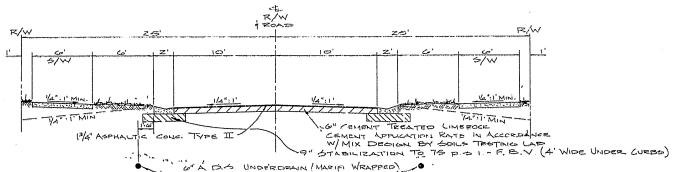
Jay A. Barker
 4-25-88



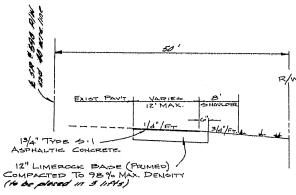
TYPICAL ROAD SECTION W/ MEDIAN

@ STA. 2+15.00

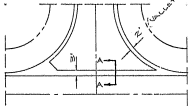
NOTE: SIDEWALK TO BE 4\"/>



TYPICAL ROAD SECTION

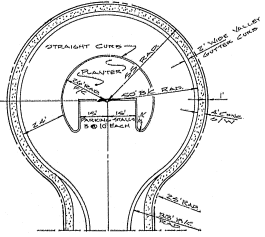


ACCEL-DECEL LANE TYPICAL SECTION

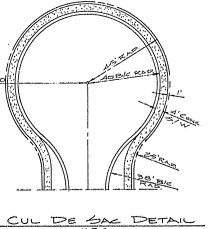


TYPICAL DRIVE-OVER CURB DETAIL

NOTE: ALL CURBS RASH TO PARALLEL R/W UNLESS SHOWN OTHERWISE.



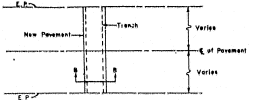
CUL DE SAC DETAIL



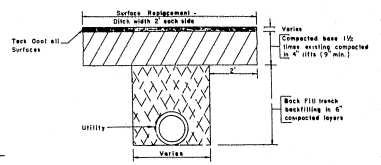
CUL DE SAC DETAIL

REPAIR NOTES:

- Existing pavement shall be saw cut along a neat straight line.
- Backfill for the trench shall be placed in 4\"/>

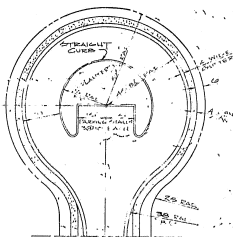


PLAN VIEW

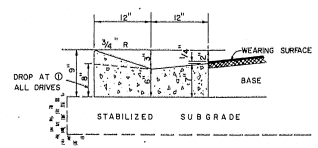


SECTION B-B

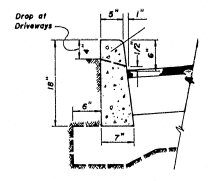
REPAIR OF PAVEMENT CUT



CUL DE SAC DETAIL



VALLEY GUTTER CURB



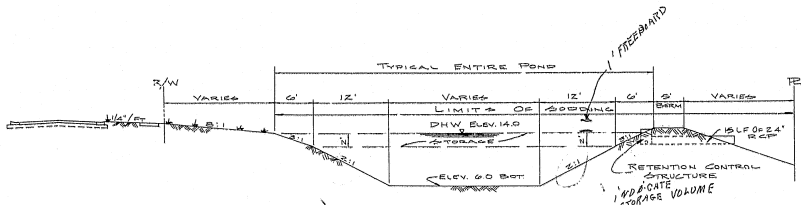
STRAIGHT CURB DETAIL

- NOTES
- There shall be a 1/2\"/>

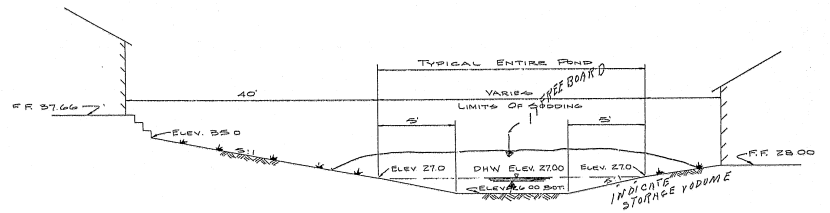
REVISED

OWNER	PROJECT NAME	SEC. TWP. S., R.N.G. E.	NORTH	SHEET	REVISIONS									
TRECO COMMUNITIES INC.	PHILIPPE BAY TYPICAL CONSTRUCTION DETAILS			3/12	<table border="1"> <tr> <td>1</td> <td>APPROVED FOR THE PROJECT</td> <td>DATE: 10/15/08</td> </tr> <tr> <td>2</td> <td>REVISED TO SHOW TYPICAL DRIVE-OVER CURB DETAIL</td> <td></td> </tr> <tr> <td>3</td> <td>REVISED TO SHOW TYPICAL DRIVE-OVER CURB DETAIL</td> <td></td> </tr> </table>	1	APPROVED FOR THE PROJECT	DATE: 10/15/08	2	REVISED TO SHOW TYPICAL DRIVE-OVER CURB DETAIL		3	REVISED TO SHOW TYPICAL DRIVE-OVER CURB DETAIL	
1	APPROVED FOR THE PROJECT	DATE: 10/15/08												
2	REVISED TO SHOW TYPICAL DRIVE-OVER CURB DETAIL													
3	REVISED TO SHOW TYPICAL DRIVE-OVER CURB DETAIL													

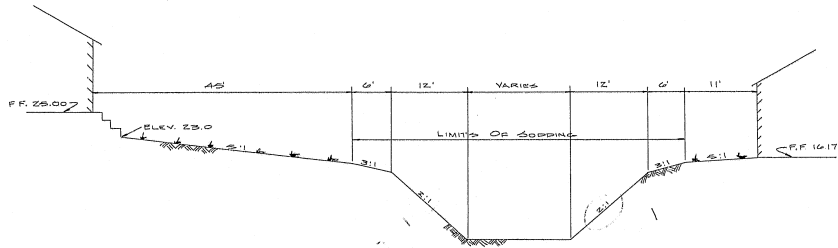
George F. Young, Inc.
 ARCHITECTS • ENGINEERS • PLANNERS • SURVEYORS
 109 ARLINGTON AVE. • ST. PETERSBURG, FL 33701 • 813.924.4117
 100 N.W. 10TH AVENUE, SUITE 1000 • MIAMI, FL 33136 • 305.575.1100
 1000 WEST WASHINGTON ST. • TAMPA, FL 33606 • 813.934.5000
 1000 WEST WASHINGTON ST. • TAMPA, FL 33606 • 813.934.5000
 1000 WEST WASHINGTON ST. • TAMPA, FL 33606 • 813.934.5000



SECTION A-A
DETENTION AREA "A"
N.T.S.



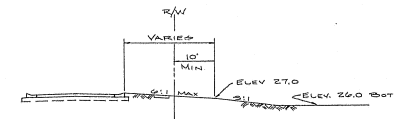
SECTION A-A
DETENTION AREA "B"
N.T.S.



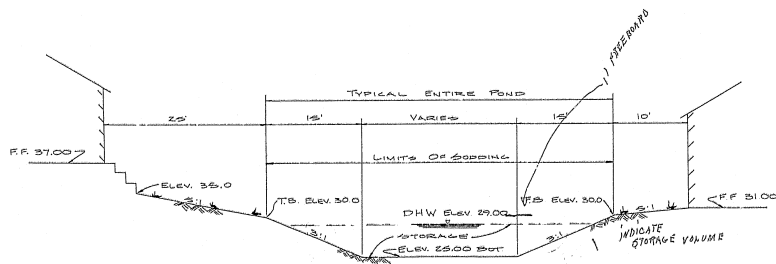
SECTION B-B
DETENTION AREA "A"
N.T.S.



TYPICAL SWALE SECTION
N.T.S.




SECTION B-B
DETENTION AREA "B"
N.T.S.



SECTION A-A
DETENTION AREA "C"
N.T.S.

OWNER	PROJECT NAME	SEC. TWP. S. RING. E.	NORTH	SHEET	REVISIONS
TRECO COMMUNITIES INC.	PHILIPPE BAY			9/12	



George F. Young, Inc.
 ARCHITECTS • ENGINEERS • PLANNERS • SURVEYORS
 1118 ARLINGTON AVE., N.E. • ST. PETERSBURG, FL 33701 • 813-522-4317
 1201 U.S. 90 NORTH • PALM HARBOR, FL 33601 • 813-766-8718
 1100 W. GULF BLVD. • GULF BLDG. 111 • ST. PETERSBURG, FL 33705

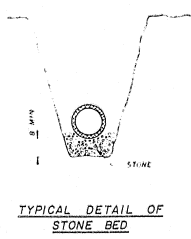
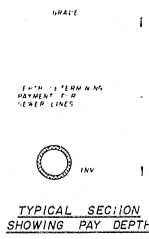
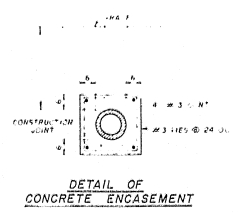
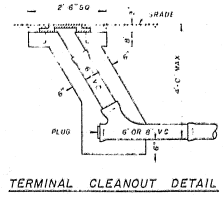
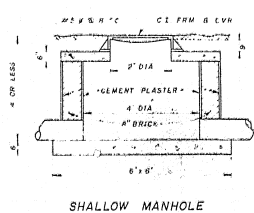
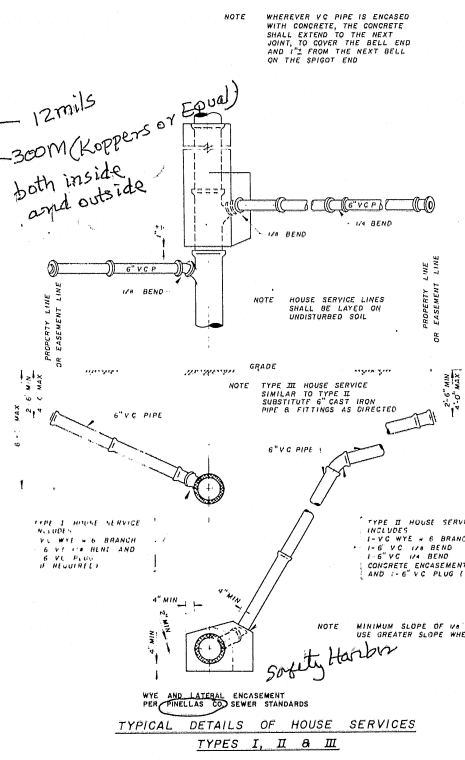
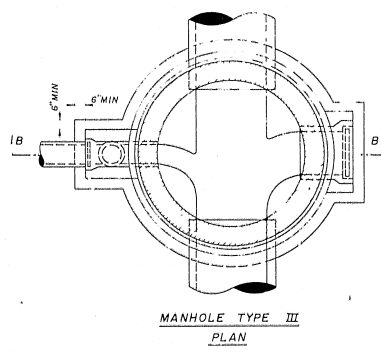
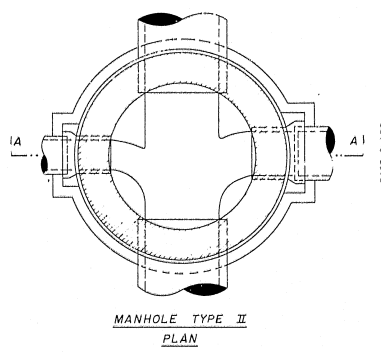
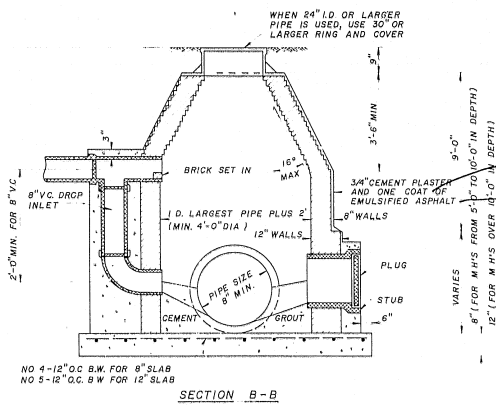
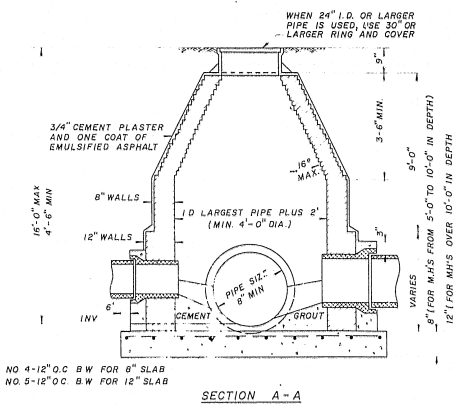
APPROVED: *Stacy A. Combs*
 CHECKED: *Stacy A. Combs*
 DATE: 9-25-93
 PROJECT NO. 92-001-2358
 DRAWING NO.

GENERAL NOTES

1. Check location of underground utilities with utility company. Notify utility companies 24 hours in advance of excavating.
2. The contractor shall provide all bracing, sheeting or shoring necessary to construct and protect the excavation against collapsing. Trenches shall be kept dry while pipe is being laid. Dewatering shall be provided where necessary.
3. Sewer pipe installed with a minimum of 36" of cover will be vitrified clay, bell and spigot pipe, extra strong, with compression joints. If less than 36" of cover, cast iron or ductile iron will be used.
4. A lateral separation of 10 feet will be maintained between the water main and sewer pipe in case of a crossing a vertical separation of not less than 18" will be maintained.
5. Pipe will be on dry undisturbed soil. Wet unsuitable material will be replaced with compacted select backfill material.
6. Manhole cover & frame with the words "Pinellas County Sanitary Sewer" w/yr. of construction cast in the cover. U.S. Foundry 166, traffic type or approved equal.
7. Precast or prestressed concrete manholes of a reputable manufacturer may be submitted for approval in lieu of the details shown.
8. Rim elevation will be adjusted slightly so the rim does not protrude above adjacent ground.
9. Manhole to rest on DRY undisturbed soil. Otherwise manhole shall be placed on 12" of compacted crushed rock.
10. Backfill material will be solidly tamped around the pipes in 6" layers up to a level of least one foot above the top of the pipe. In areas to be paved, backfill will be compacted to 98% of maximum density of 12" layers to the proposed pavement.
11. All concrete will have a minimum ultimate compressive strength of 3,000 p.s.i.
12. All material will be new.
13. All work to be done in accordance with Pinellas County standards & specifications.
14. Precast manholes to use Type II cement and be submitted to Pinellas County Sewer for approval.

Safety Harbor
 Manhole frame and cover (for normal service) shall be Neenah Foundry Figure No R 1772-A, Vulcan Foundry VM-37 or equal.

NOTE: THERE SHALL BE A MINIMUM OF 10' HORIZONTAL SEPARATION BETWEEN SANITARY SEWERS AND WATER LINES AND A MINIMUM 18" VERTICAL SEPARATION UNLESS 20' OF DUCTILE IRON PIPE IS INSTALLED.



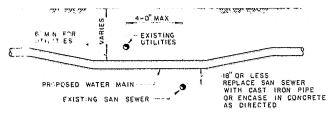
SANITARY SEWER DETAILS

FOR	PROJECT NAME	SEC. TWP. S. RING. E.	NORTH	SHEET	REVISIONS
TRECO COMMUNITIES INC.	PHILIPPE BAY			10 12	
SANITARY SEWER DETAILS					

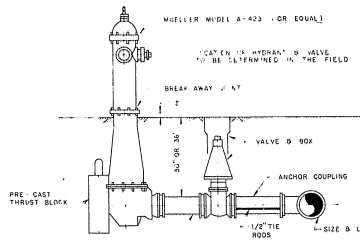
George F. Young, Inc.
 CONSULTING ENGINEERS LAND PLANNERS & SURVEYORS
 819 ARLINGTON AVE. N.
 ST. PETERSBURG, FLORIDA

APPROVED: *Sandy A. ...*
 DRAWN: *Sandy A. ...*
 CHECKED: *Sandy A. ...*

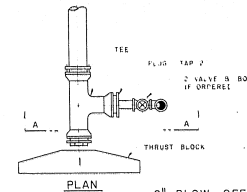
SCALE NONE
 DATE: 4-25-83
 DRAWING NUMBER



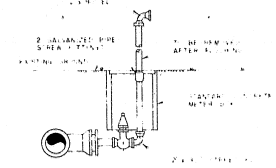
TYPICAL DETAIL OF UTILITY CROSSING
SCALE NONE



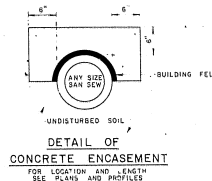
DETAIL OF HYDRANT INSTALLATION
SCALE NONE



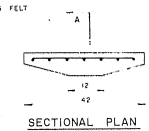
2" BLOW OFF DETAIL
SCALE NONE



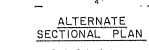
SECTION A-A



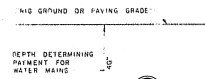
DETAIL OF CONCRETE ENCASEMENT
SCALE NONE



SECTIONAL PLAN



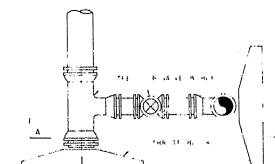
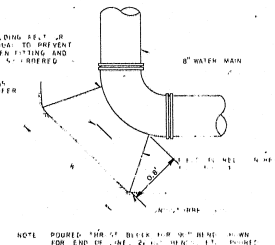
ALTERNATE SECTIONAL PLAN



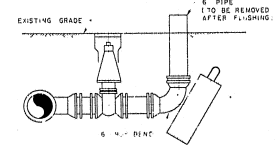
TYPICAL SECTION SHOWING PAY DEPTH

THRUST BLOCK FOR WATER MAIN	
COLLECTION OF BENDS	"w" Secured
90°	2.6
45°	2.0
22 1/2°	1.4
TEE	2.2

DETAIL OF FIELD POURED THRUST BLOCK
SCALE NONE



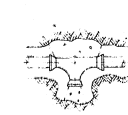
6" BLOW OFF DETAIL
SCALE NONE



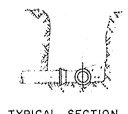
DETAIL OF PRECAST CONCRETE THRUST BLOCK FOR PIPE B AND UNDER
SCALE NONE



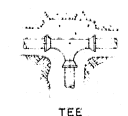
CROSS WITH PLUG



TEE WITH PLUG



TYPICAL SECTION

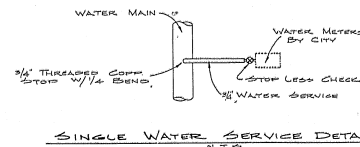


TEE



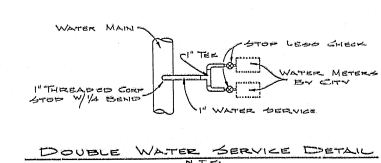
BEND

DETAILS OF THRUST BLOCKS
SCALE NONE

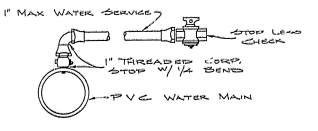


SINGLE WATER SERVICE DETAIL
N.T.S.

GENERAL NOTES
EXISTING WATER LINES METERS AND HOUSE SERVICES TO BE PROTECTED FROM DAMAGE TO INSURE UNINTERRUPTED WATER SERVICE FOR HOUSES ALONG CONSTRUCTION ROUTES
ALL WORK TO BE DONE IN ACCORDANCE WITH PINELLAS COUNTY STANDARDS AND SPECIFICATIONS.
ALL TAP VALVES AND SLEEVES TO BE INSTALLED BY THE CONTRACTOR, TAP BY CITY OR CONTRACTOR
ALL 3/4" TAPS ETC. TO NEW MAINS FOR TESTING AND STERILIZATION BY CONTRACTOR

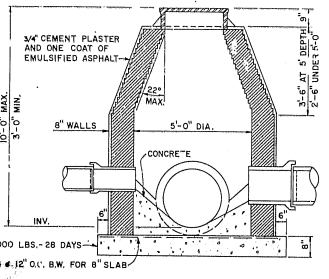
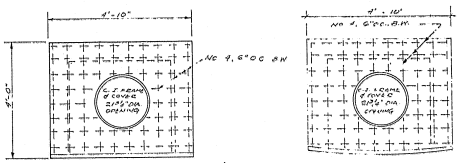
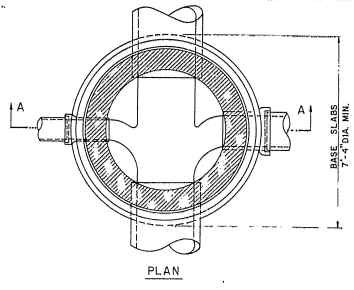


DOUBLE WATER SERVICE DETAIL
N.T.S.

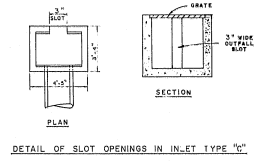
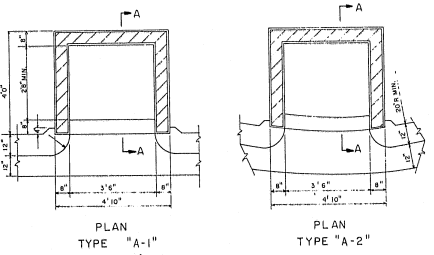


TYPICAL SERVICE CONNECTION

OWNER	PROJECT NAME	SEC. TWP. S. R. NG. E.	NORTH	SHEET	REVISIONS
TRECO COMMUNITIES INC.	PHILIPPE BAY			11 / 12	
WATER DISTRIBUTION DETAILS					
George F. Young, Inc. CONSULTING ENGINEERS AND PLANNERS & SURVEYORS 819 ARLINGTON AVE N. ST. PETERSBURG, FLORIDA <i>George F. Young</i> 4-23-83					



STORM MANHOLE



GENERAL NOTES

Concrete shall be of a mix that will produce a strength of 3,000 lbs. after 28 days.

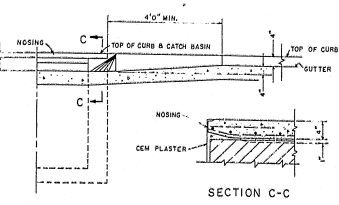
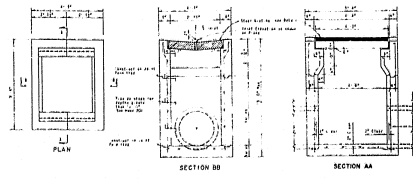
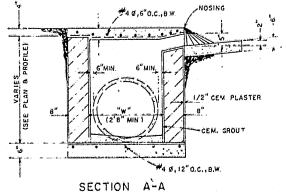
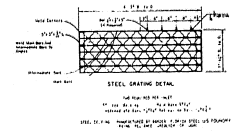
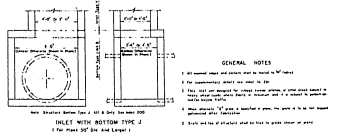
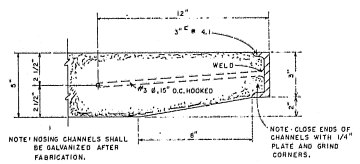
Reinforcing steel to comply with A.S.T.M. Specifications A-15.

The Inspector shall be given an opportunity to review the placing of steel prior to pouring of concrete.

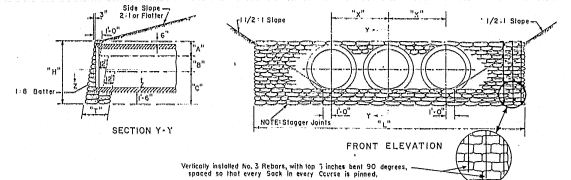
Where conditions do not permit the use of standard catch basins, special designs will be prepared by the engineer.

Brick shall be common brick or cement brick complying with A.S.T.M. Specifications C-55-37.

Mortar shall consist of one part portland cement and three parts diamond sand or equal, or one part portland cement, one part masonry cement and six parts diamond sand or equal.



TYPICAL FRONT ELEVATION OF CATCH BASIN AND CURB

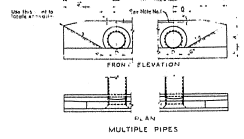


Vertically installed No. 3 Rebar, with top 1 inches bent 90 degrees, spaced to that every 6 inches in every Course is placed.

SIZE OF PIPE	DIMENSIONS				QUANTITIES FOR ONE ENDWALL				
	H	T	A	C	ONE PIPE CULVERT	TWO PIPE CULVERTS	FOUR PIPE CULVERTS	FOUR PIPE CULVERTS	
18"	3'-10"	1'-0"	3'-10"	0'-0"	0'-0"	1.05	10'-10"	1.34	13'-8"
24"	4'-2"	2'-0"	3'-10"	0'-0"	3'-0"	2.22	13'-1"	2.82	16'-6"
30"	5'-0"	2'-0"	3'-10"	0'-0"	4'-3"	3.36	15'-4"	3.91	19'-9"
36"	5'-7"	2'-0"	3'-10"	0'-0"	5'-11"	4.50	17'-11"	5.09	23'-1"
42"	6'-3"	3'-0"	2'-0"	2'-3"	6'-0"	5.64	20'-7"	7.83	25'-7"
48"	6'-10"	3'-0"	2'-0"	2'-0"	6'-9"	7.15	23'-0"	9.81	29'-9"
54"	7'-4"	3'-0"	2'-0"	3'-0"	7'-0"	8.32	25'-0"	12.16	33'-4"
60"	8'-2"	3'-0"	2'-0"	4'-2"	8'-0"	11.53	29'-3"	14.95	38'-9"
66"	8'-7"	3'-0"	2'-0"	4'-7"	8'-6"	12.92			
72"	9'-2"	3'-0"	2'-0"	5'-2"	9'-3"	15.07			

TABLE OF CONSTRUCTION DATA AND ESTIMATED QUANTITIES FOR ROUND PIPE CULVERTS ENDWALLS CONCRETE

D	DIMENSIONS				QUANTITIES IN ONE ENDWALL				PIPE TYPE	D
	H	T	A	C	CONCRETE	REBAR	FORM	FORM		
18"	3'-10"	1'-0"	3'-10"	0'-0"	1.05	10'-10"	1.34	13'-8"	1.04	18"
24"	4'-2"	2'-0"	3'-10"	0'-0"	3'-0"	13'-1"	2.82	16'-6"	4.13	24"
30"	5'-0"	2'-0"	3'-10"	0'-0"	4'-3"	15'-4"	3.91	19'-9"	5.54	30"
36"	5'-7"	2'-0"	3'-10"	0'-0"	5'-11"	17'-11"	5.09	23'-1"	7.17	36"
42"	6'-3"	3'-0"	2'-0"	2'-3"	6'-0"	20'-7"	7.83	25'-7"	9.71	42"
48"	6'-10"	3'-0"	2'-0"	2'-0"	6'-9"	23'-0"	9.81	29'-9"	12.51	48"
54"	7'-4"	3'-0"	2'-0"	3'-0"	7'-0"	25'-0"	12.16	33'-4"	15.92	54"
60"	8'-2"	3'-0"	2'-0"	4'-2"	8'-0"	29'-3"	14.95	38'-9"	20.79	60"
66"	8'-7"	3'-0"	2'-0"	4'-7"	8'-6"	31'-7 1/2"	12.92			66"
72"	9'-2"	3'-0"	2'-0"	5'-2"	9'-3"	33'-5"	15.07			72"

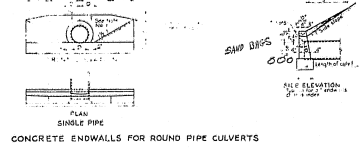


GENERAL NOTES

1. Reinforcing steel grade 40 or 60 Cast or bars shall be indicated in the contract and price for concrete.

2. For adding around endwall see detail on sheet 221.

3. Provide 20 inches from end wall to ditch slope on each side unless indicated otherwise on drawing.



DETENTION CONTROL STRUCTURE D.B.I. INLET TYPE "C"

OWNER	PROJECT NAME	SEC. TWP. S., RNG. E.	NORTH	SHEET	REVISIONS
TRECO COMMUNITIES INC.	PHILIPPE BAY			12	
STORM SEWER DETAILS					
George F. Young, Inc.					
CONSULTING ENGINEER		1ND PLANNERS & SURVEYORS			
819 ARLINGTON AVE., N.		ST. PETERSBURG, FLORIDA			
DESIGNED: J.S.B.	CHECKED: [Signature]	DATE: 4-25-83		DRAWING NUMBER	